

MILLINER LOFTS

L U X U R Y A P A R T M E N T S



One Bedroom
One Bath
Units

Prices subject to change



CONTACT US:

Located on the 1st floor, Unit 103 is approximately 1094 sq ft. This floorplan is one bedroom one bathroom as well as a study.

maltomonte@kw.com @

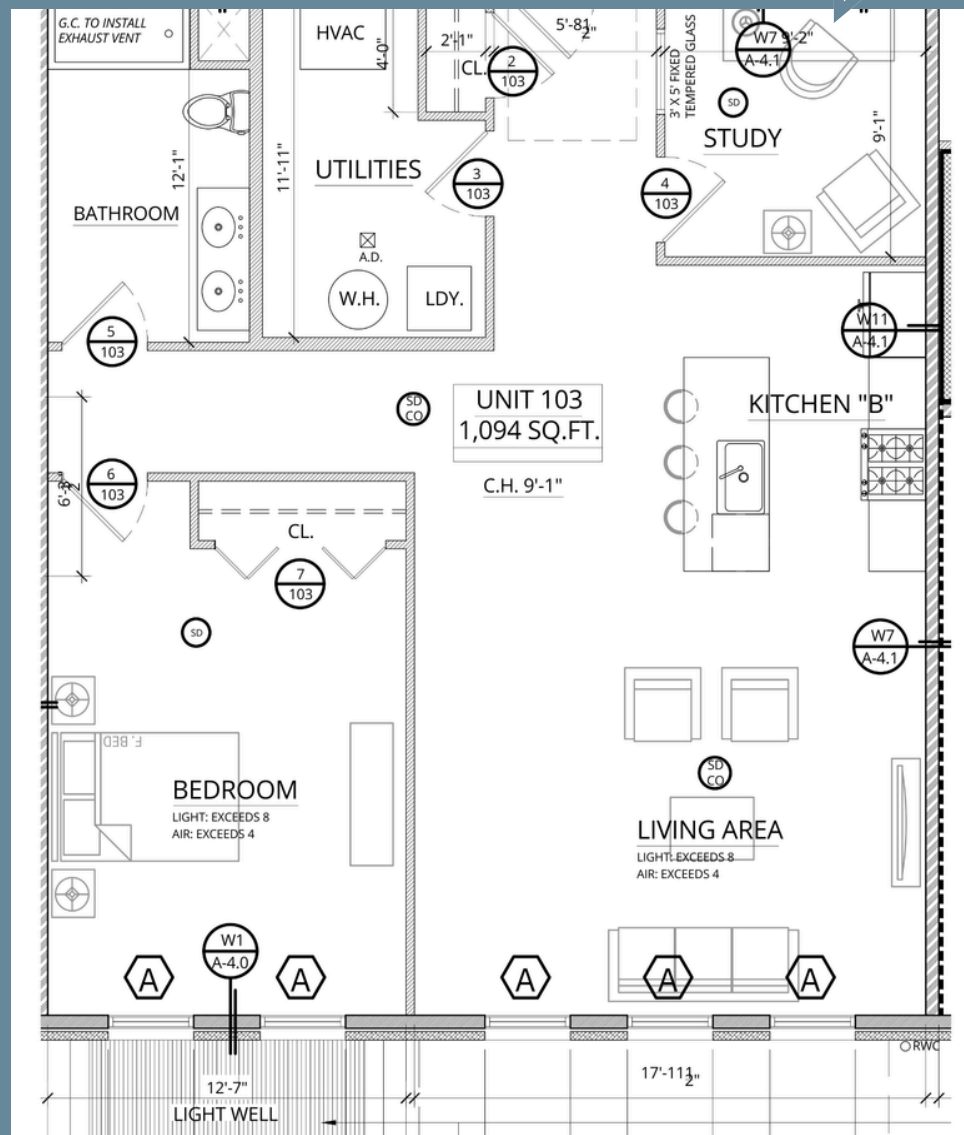
M - 908-247-9678 ☎

O - 215-340-5700 ☎

Milliner Lofts boast these key features;

- Designer interiors
- Water, Sewer, Trash removal included
- Granite counter tops
- Stainless steel appliances
- Washer and Dryer in unit
- Fitness center
- Community Lounge
- Common area cleaning and maintenance

\$2660
unit 103



CONTACT US:

Located on the 1st floor, Unit 105 is approximately 930 sq ft. This floorplan is one bedroom with large closets and one bathroom.

maltomonte@kw.com 

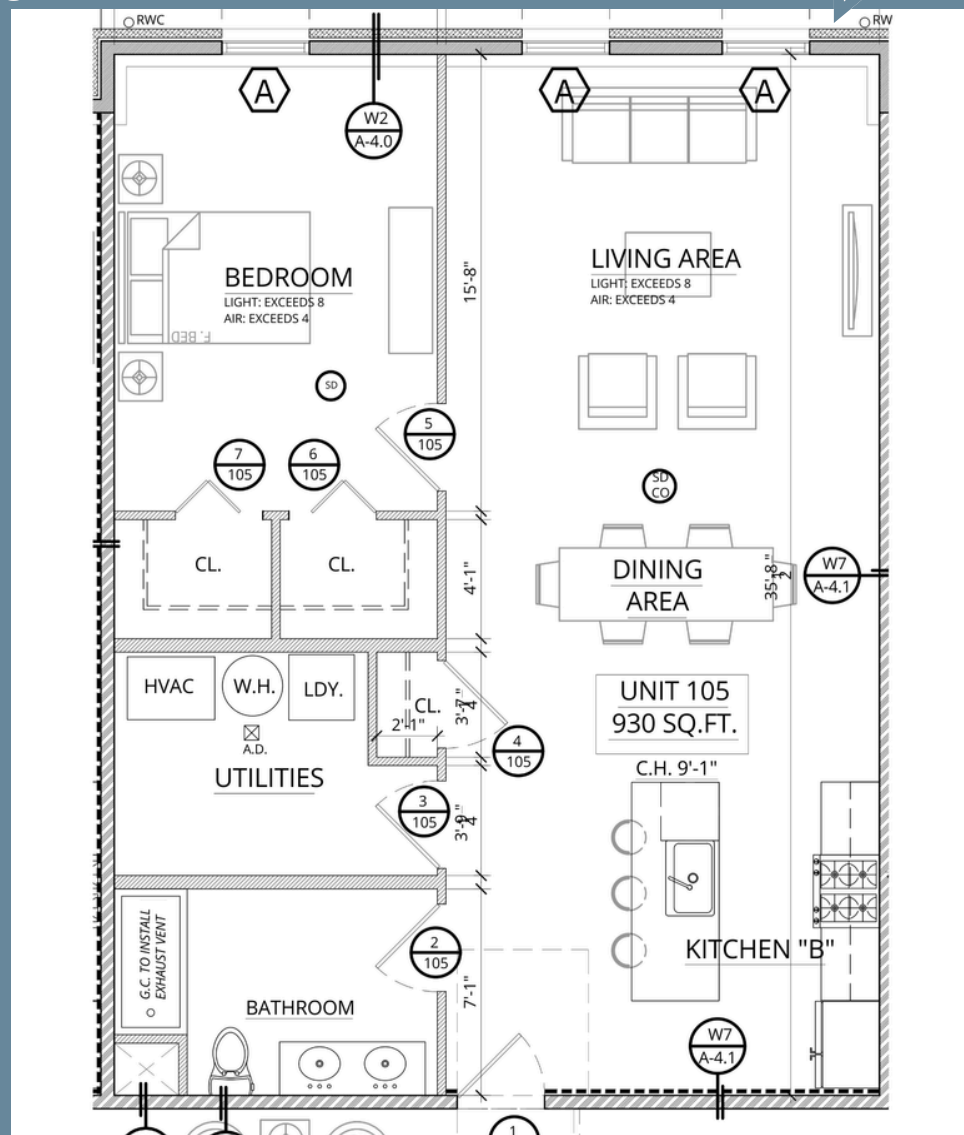
M - 908-247-9678 

O - 215-340-5700 

Milliner Lofts boast these key features;

- Designer interiors
- Water, Sewer, Trash removal included
- Granite counter tops
- Stainless steel appliances
- Washer and Dryer in unit
- Fitness center
- Community Lounge
- Common area cleaning and maintenance

\$2260
unit 105



26 South York Road, Hatboro PA 19040

CONTACT US:

Located on the 1st floor, Unit 104 is approximately 888 sq ft. This floorplan is one bedroom one bathroom with an open concept living, kitchen dining area.

maltomonte@kw.com @

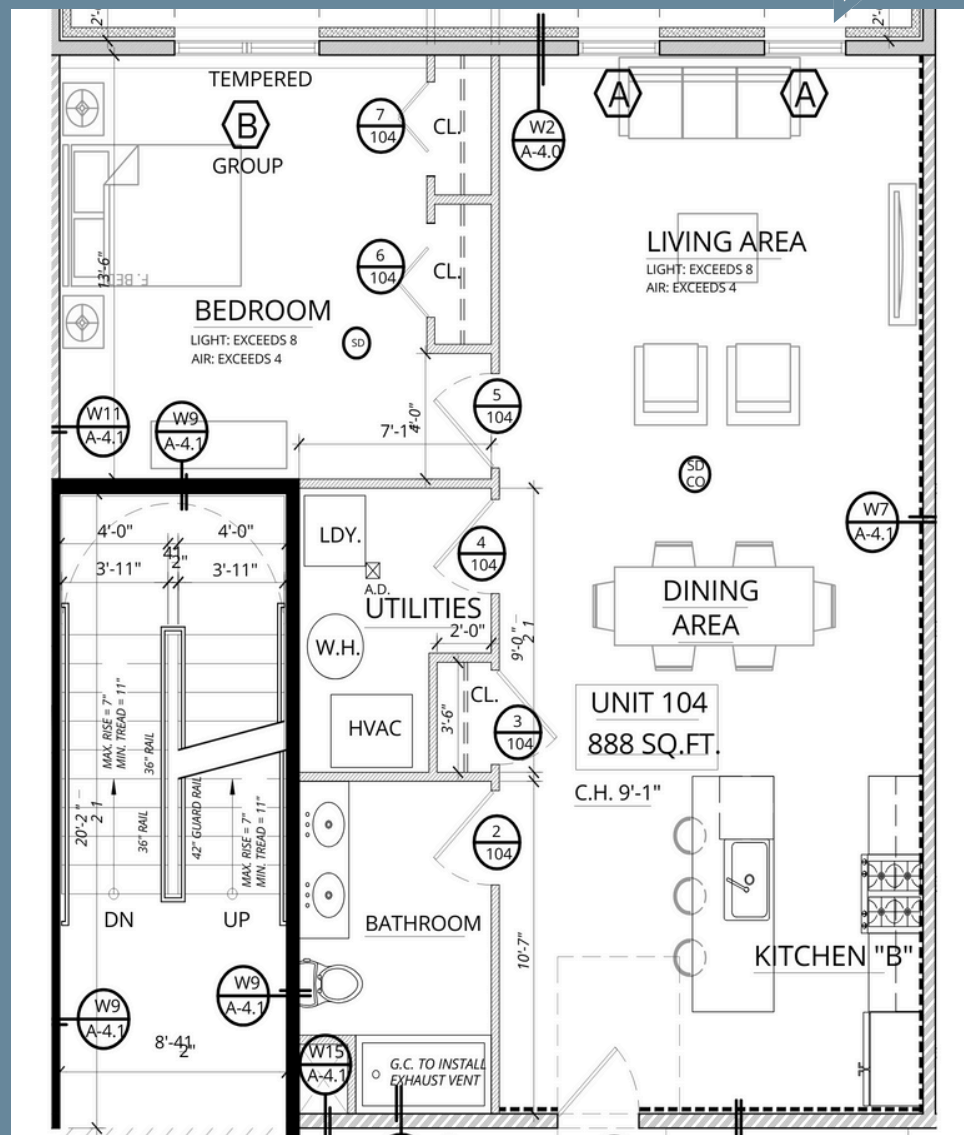
M - 908-247-9678 ☎

O - 215-340-5700 ☎

Milliner Lofts boast these key features;

- Designer interiors
- Water, Sewer, Trash removal included
- Granite counter tops
- Stainless steel appliances
- Washer and Dryer in unit
- Fitness center
- Community Lounge
- Common area cleaning and maintenance

\$2158
unit 104



26 South York Road, Hatboro PA 19040

CONTACT US:

Located on the 1st floor, Unit 106 is approximately 1032 sq ft. This floorplan is one bedroom one bathroom with a study.

maltomonte@kw.com

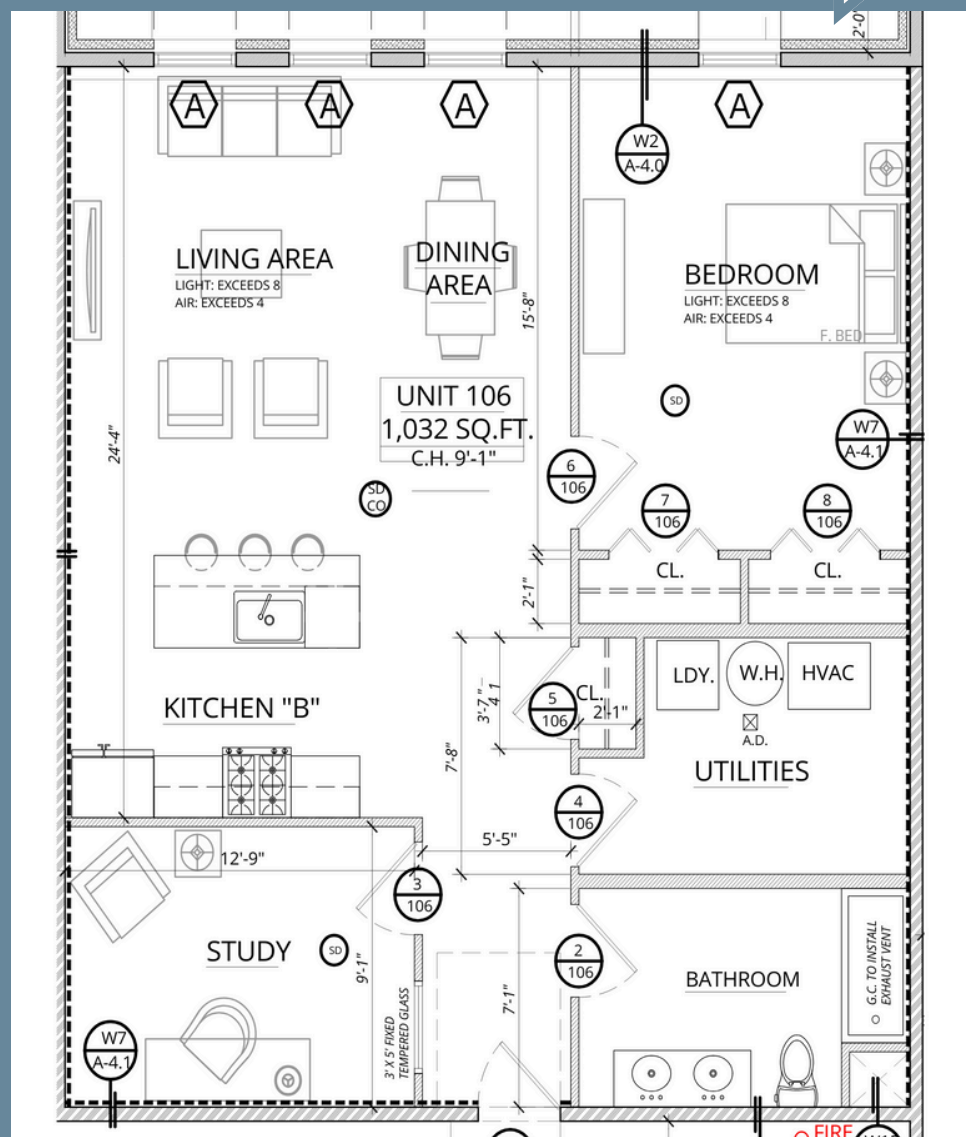
M - 908-247-9678

O - 215-340-5700

Milliner Lofts boast these key features;

- Designer interiors
- Water, Sewer, Trash removal included
- Granite counter tops
- Stainless steel appliances
- Washer and Dryer in unit
- Fitness center
- Community Lounge
- Common area cleaning and maintenance

\$2508
unit 106



26 South York Road, Hatboro PA 19040

CONTACT US:

maltomonte@kw.com @

908-247-9678 ☎

215-340-5700 ☎

Located on the 2nd, 3rd, and 4th floors, Unit 204, 304, and 404 are approximately 888 sq ft. This floorplan is one bedroom one bathroom with an open concept living, kitchen dining area.

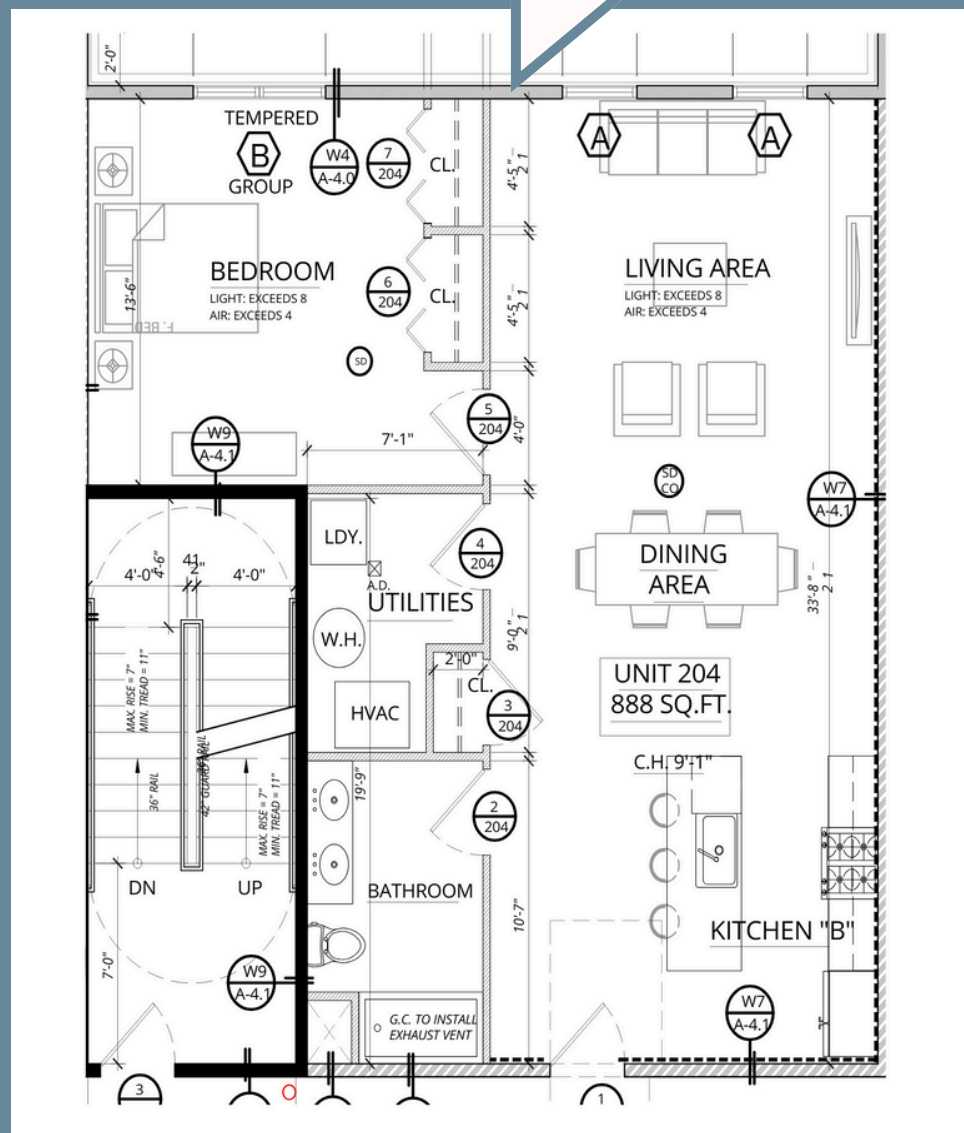
Milliner Lofts boast these key features;

- Designer interiors
- Water, Sewer, Trash removal included
- Granite counter tops
- Stainless steel appliances
- Washer and Dryer in unit
- Fitness center
- Community Lounge
- Common area cleaning and maintenance

\$ 2300
unit 204

\$2300
unit 304

\$2400
unit 404




26 South York Road, Hatboro PA 19040

CONTACT US:

Located on the 2nd, 3rd, and 4th floors, Unit 208, 308, and 408 are approximately 1032 sq ft. This floorplan is one bedroom one bathroom with a study.

maltomonte@kw.com 

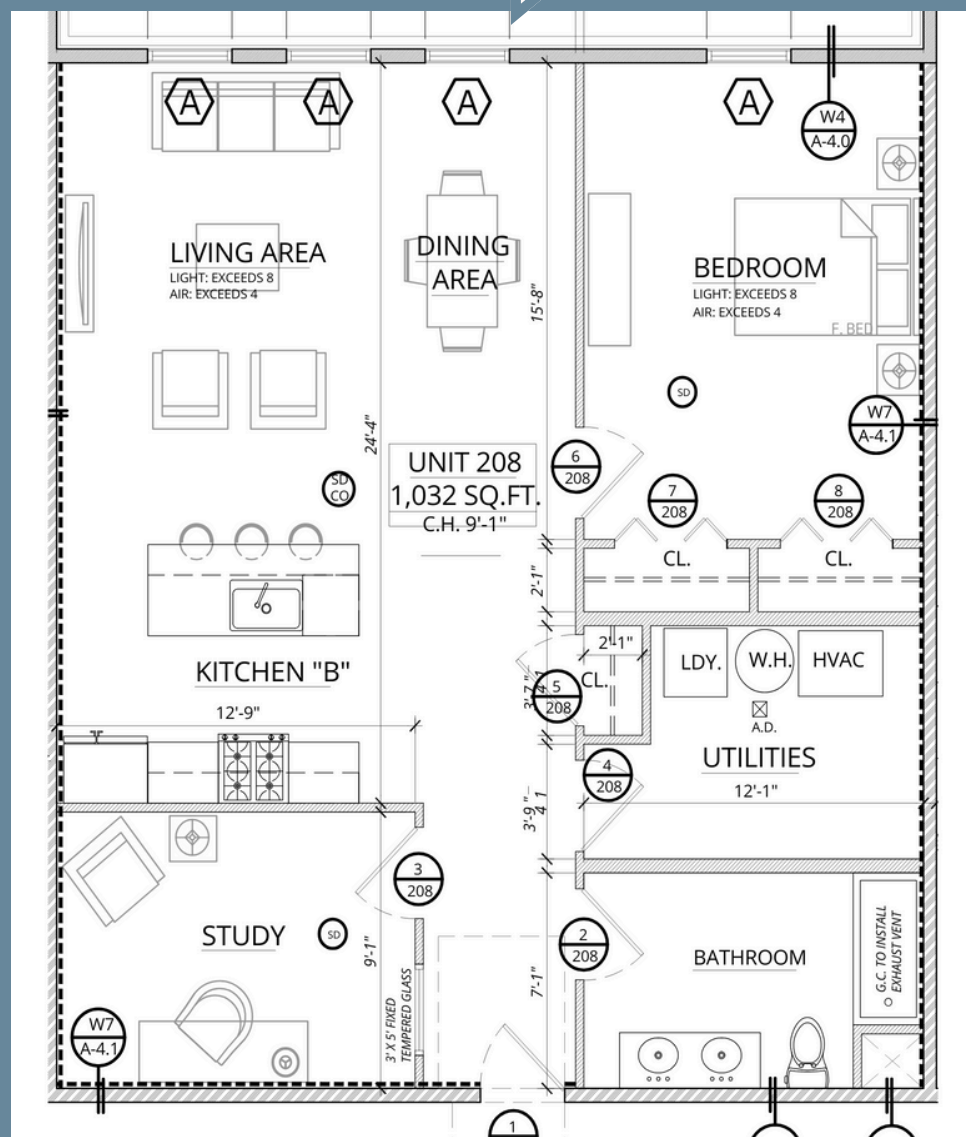
908-247-9678 

215-340-5700 

Milliner Lofts boast these key features;

- Designer interiors
- Water, Sewer, Trash removal included
- Granite counter tops
- Stainless steel appliances
- Washer and Dryer in unit
- Fitness center
- Community Lounge
- Common area cleaning and maintenance

\$ 2672	\$2672	\$2780
unit 208	unit 308	unit 408



26 South York Road, Hatboro PA 19040

Located on the 2nd floor Unit 207 is approximately 826 sq ft. This floorplan is one bedroom one bathroom with an open concept living, kitchen dining area.

CONTACT US:

maltomonte@kw.com @

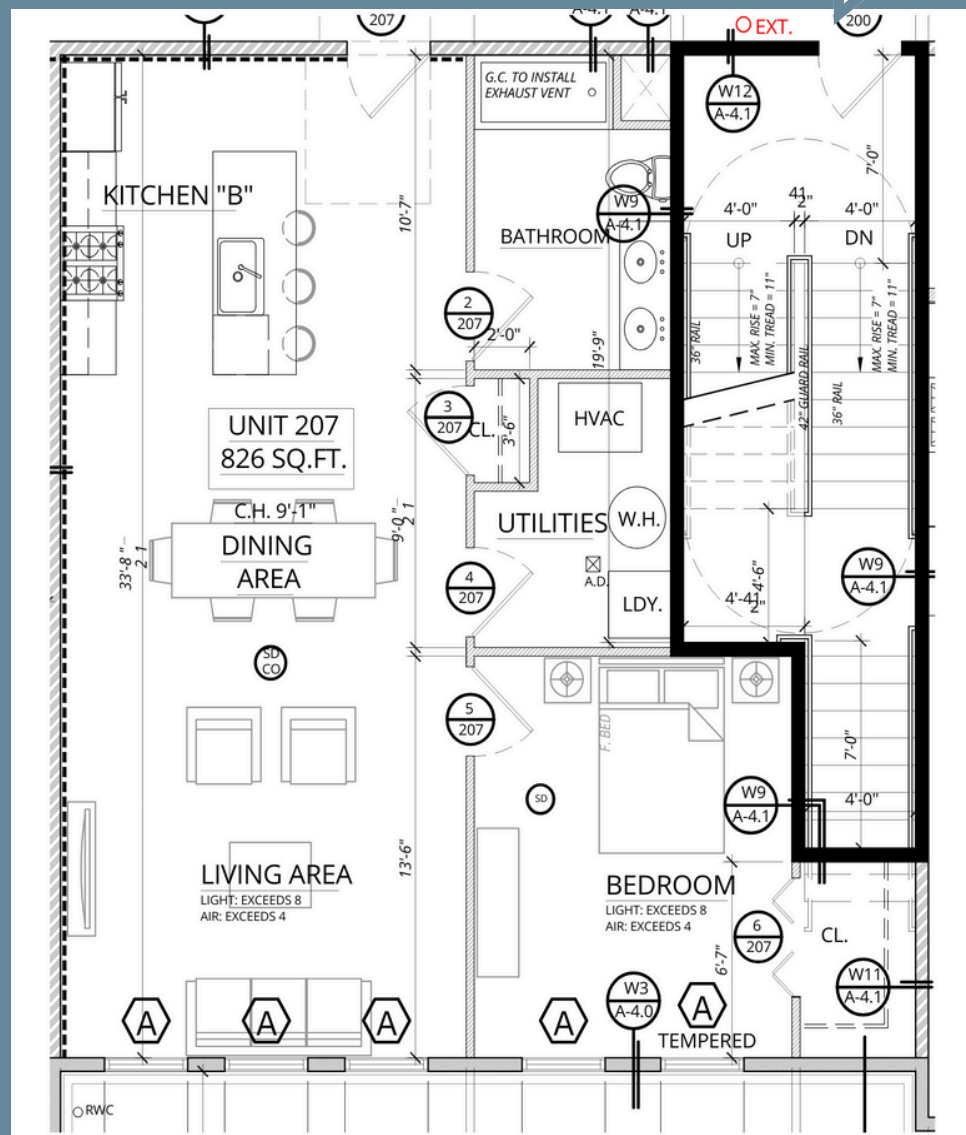
908-247-9678 ☎

215-340-5700 ☎

Milliner Lofts boast these key features;

- Designer interiors
- Water, Sewer, Trash removal included
- Granite counter tops
- Stainless steel appliances
- Washer and Dryer in unit
- Fitness center
- Community Lounge
- Common area cleaning and maintenance

\$ 2211
unit 207



26 South York Road, Hatboro PA 19040

CONTACT US:

maltomonte@kw.com @

908-247-9678 ☎

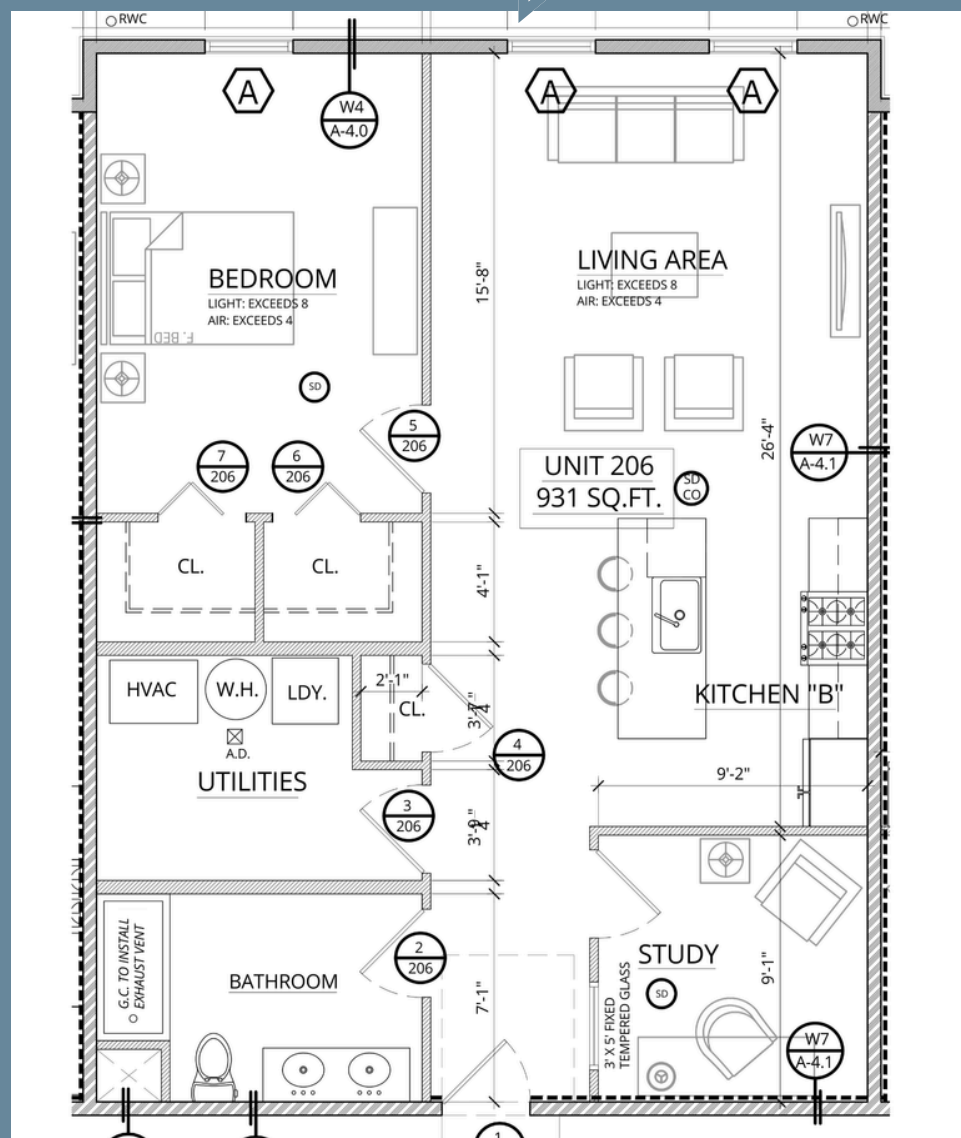
215-340-5700 ☎

Located on the 2nd, 3rd and 4th floors
Units 206, 306, & 406 are approximately
826 sq ft. This floorplan is one bedroom
one bathroom with an open concept
living, kitchen dining area.

Milliner Lofts boast these key features;

- Designer interiors
- Water, Sewer, Trash removal included
- Granite counter tops
- Stainless steel appliances
- Washer and Dryer in unit
- Fitness center
- Community Lounge
- Common area cleaning and maintenance

\$ 2411	\$2411	\$2513
unit 206	unit 306	unit 406



26 South York Road, Hatboro PA 19040

CONTACT US:

maltomonte@kw.com @

M - 908-247-9678 ☎

O - 215-340-5700 ☎

Located on the 3rd and 4th floors, Unit 307 & 407 are approximately 854 sq ft.

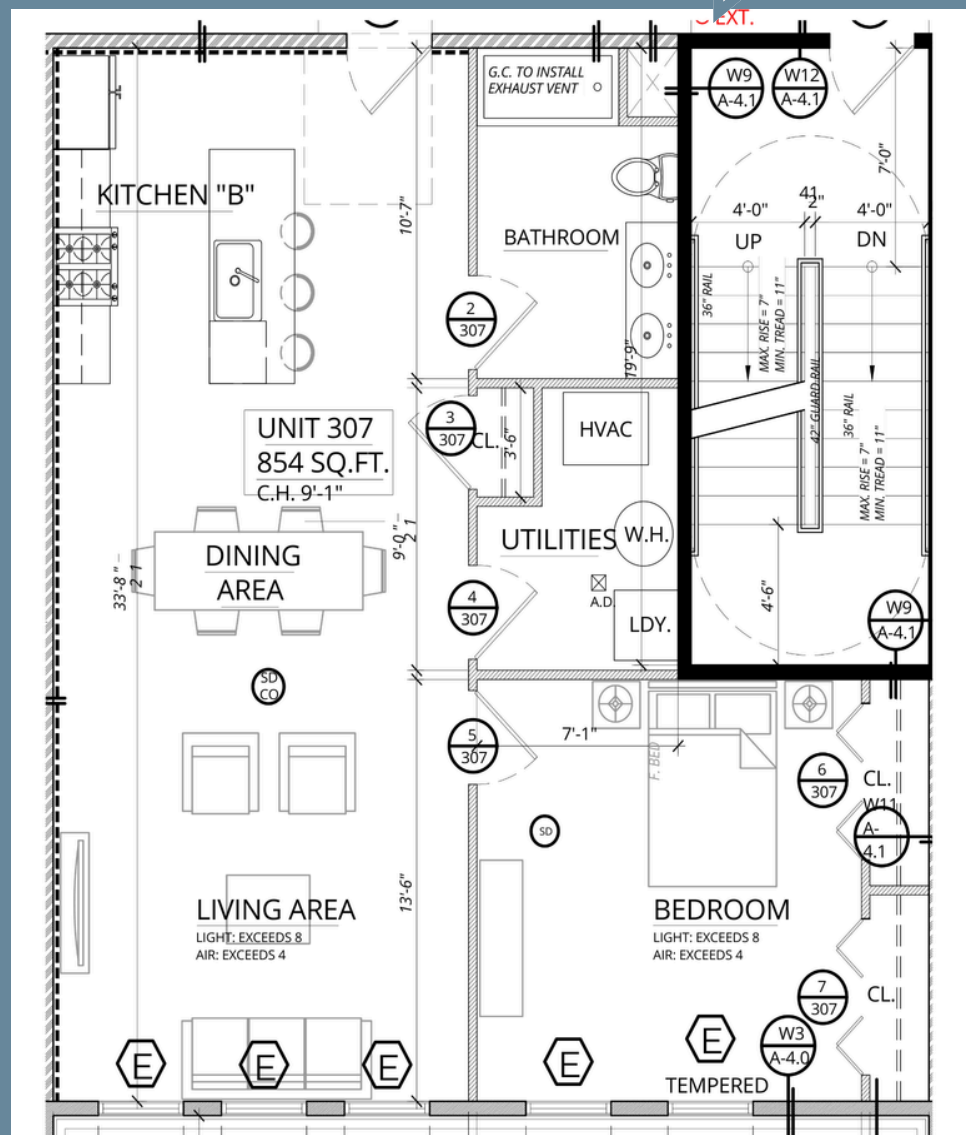
This floorplan is one bedroom one bathroom with an open concept living, kitchen dining area.

Milliner Lofts boast these key features;

- Designer interiors
- Water, Sewer, Trash removal included
- Granite counter tops
- Stainless steel appliances
- Washer and Dryer in unit
- Fitness center
- Community Lounge
- Common area cleaning and maintenance

\$2211
unit 307

\$2305
unit 407



26 South York Road, Hatboro PA 19040